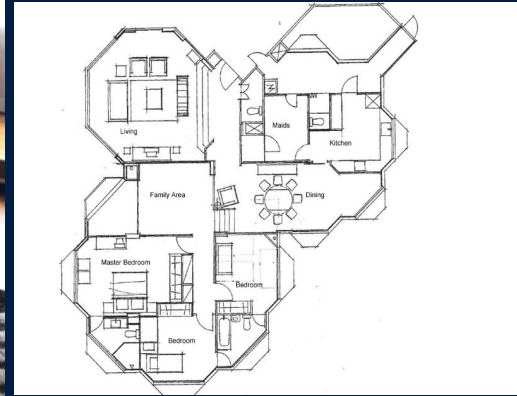


FOR SALE

RESIDENTIAL - CONDOMINIUM
2,928SQFT (272SQM) / S\$ 6,000,000

+65 9190 0545



RESIDENTIAL - CONDOMINIUM

HIGH POINT, 30, MOUNT ELIZABETH, ORCHARD,
RIVER VALLEY, SINGAPORE 228519

- LISTING ID: SGLA11853366
- TENURE: FREEHOLD
- TITLE: STRATA TITLE
- SIZE BUILT-UP: 2,928SQFT (272SQM)
- SIZE LAND: N/A
- NO. OF FLOORS: 20
- FLOOR/LEVEL: N/A - HIGH FLOOR
- BED ROOMS: 4+1
- BATH ROOMS: 4
- MAIDS ROOMS: 1
- PARKING SPACES: N/A
- LAYOUT TYPE: CORNER
- FACING: N/A
- VIEWING: N/A

- SELLING PRICE: S\$ 6,000,000 **NEGOTIABLE**
2,049PSF (22,057PSM)

- COMPLETION YEAR: 1973
- CONDITION: FULLY RENOVATED
- FURNISHING: PARTIALLY FURNISHED
- LISTING DATE: DEC 18, 2019

HIGH POINT

HIGH POINT \$6M 4 BEDROOMS + FAMILY + STORE + MAID ROOM VERY HIGH FLOOR BRIGHT AND BREEZY HEAR OF ORCHARD NICE ORCHARD / CITY VIEW UNBLOCKED QUIET 57 UNITS ONLY FULLY RENOVATED OPEN CONCEPT KITCHEN POOL/GYM/BBQ/SECURITY/SECURITY EN BLOC POTENTIAL

INTERIOR FACILITIES

- Air-Conditioning
- Bathtub
- Maids Room
- Balcony
- Colonial Building

OTHER INTERIOR FEATURES

- Cooker Hob/Hood
- Dryer
- Dishwasher
- Fridge

EXTERIOR FACILITIES

- 24 Hours Security
- Function Room
- Covered Car Park
- Swimming Pool

VISIT THIS PROPERTY AT: <https://www.huttonswhd.com/property/SGLA11853366>

HUTTONS ASIA PTE LTD

CPF Bishan Building, 3, Bishan Place
Ang Mo Kio, Bishan, Thomson, D20, 579838, Singapore

+65 9190 0545
WhatsApp Me

info@huttonswhd.com

<https://www.huttonswhd.com>



Scan QR Code

William Heng
L3008899K
Call For Viewing +65 9190 0545